

Introduction

When using removable USB to Serial converters, windows can re-allocate serial ports if the converter is not plugged into the same USB port.

To change the allocated port of a USB to Serial converter, first go to Control Panel in the start menu (Figure 1)

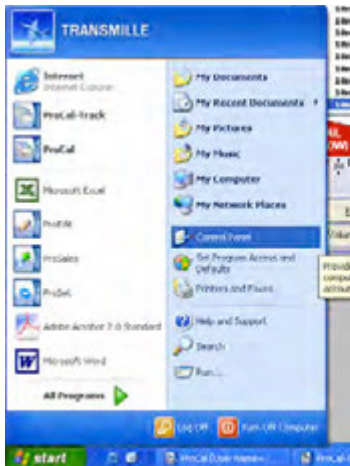


Figure 1

After selecting the Control Panel, select "System" (highlighted in Figure 2), if you do not have this view click on "switch to Classic View" in the left pane



Figure 2

After clicking "System" a popup will appear (Figure 3), navigate to the "Hardware" tab and click "Device Manager"

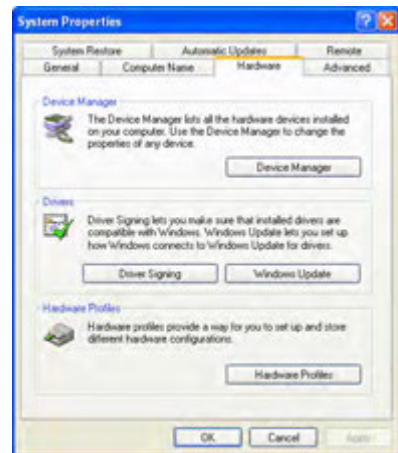


Figure 3

Another window will appear, using the scroll bar move down to "Ports (COM & LPT)" (Figure 4)

Press the + next to "Ports (COM & LPT)" and all available COM ports on the computer will appear. Identify the USB to Serial converter that you wish to modify, right click and select Properties.

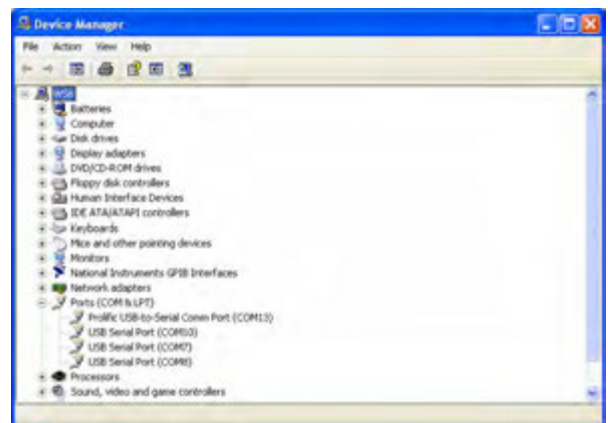


Figure 4

Another window will appear (Figure 5), in this window navigate to "Port Settings" and then click on "Advanced"

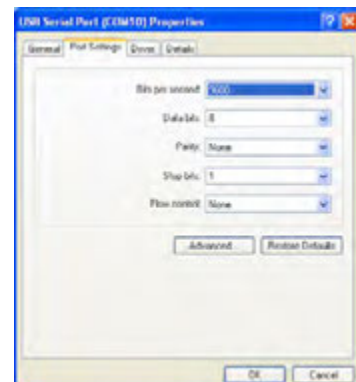


Figure 5

Another window will appear, this time simply select the required COM port (ensure that the COM port is not in use already), and then click ok.

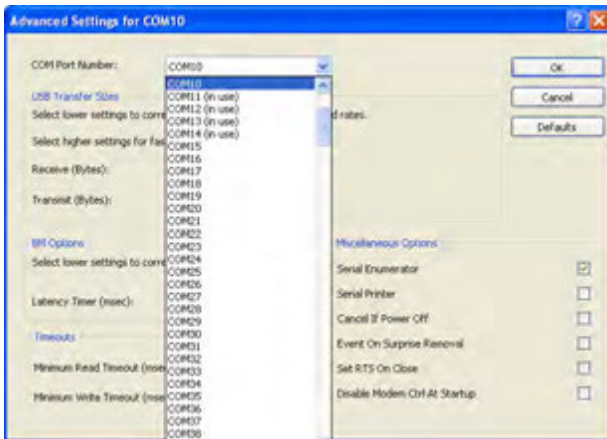


Figure 6

Please note that Windows can have issues communicating with COM ports above 16.