



PROCALTRACK

PROCAL-TRACK

**Label Printing &
Barcode Scanning**

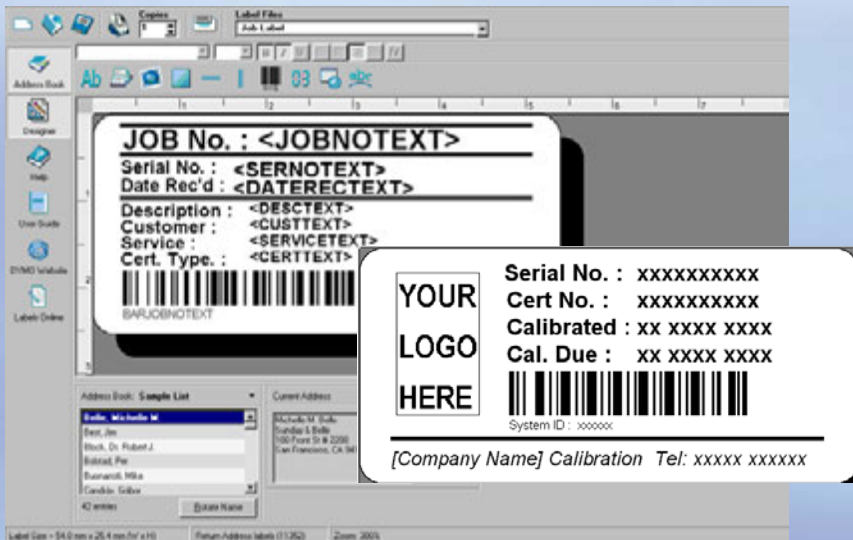
ProCal-Track :: Label Printing Support

ProCal-Track supports the DYMO range or thermal label printers

A wide range of labels can be printed, including

- Calibration Labels (with barcode)
- Job Labels (with barcode)
- Instrument ID Labels (with barcode)
- Accessory Labels (with barcode)
- Mains Safety Labels

Label formats can be edited using the DYMO label editing software - company logo's can be added to label designs



ProCal-Track :: Barcode Scanning Support

Using bar-coded labels, ProCal-Track can accept input using a *barcode scanner*.


Works with any PC using a *barcode scanner* with Y connection lead (plugs inline with the keyboard)

Also supports *USB barcode scanners*

Barcode scanning reduces data entry times (e.g. Goods Inwards)

Works in cooperation with ProCal-Track to allow instruments to be Booked In or edited with a simple *scan* of a label



| | |
|--|---|
| YOUR LOGO HERE | Serial No. : xxxxxxxxxxxx |
| | Cert No. : xxxxxxxxxxxx |
| | Calibrated : xx xxxx xxxx |
| | Cal. Due : xx xxxx xxxx |
| |  |
| | System ID : xxxxxx |
| <hr/> | |
| [Company Name] Calibration Tel: xxxxx xxxxxx | |

