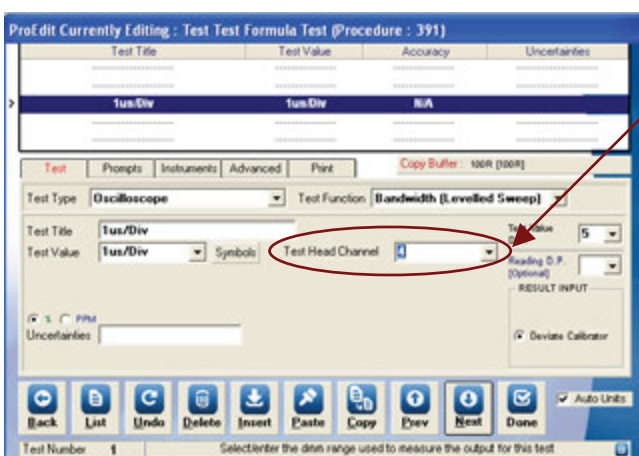
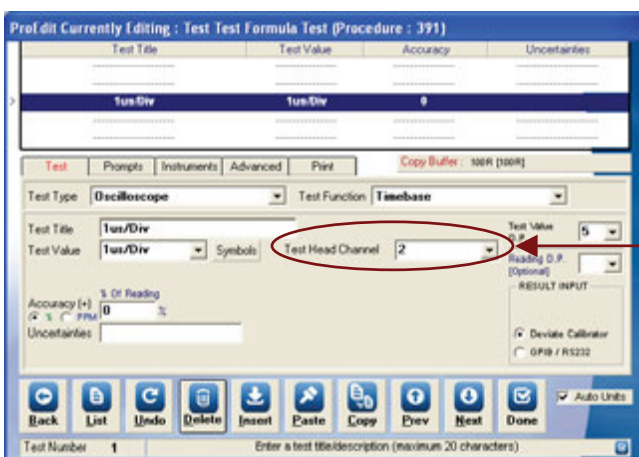


ProEdit has a dedicated drop down list to select a specific channel when using the oscilloscope test head adapter in conjunction with the Transmille 3000A Series calibrators.

1. Select OSCILLOSCOPE Test Type
2. Select AMPLITUDE / TIMEBASE / BANDWIDTH Test Function
3. Set the required channel number in the **Test Head Channel** drop down box.



Oscilloscope test head channel select

Note : To turn off all oscilloscope test head channels, select 0 or leave selection blank.