



PROSITE  
**ProCal On-Site Database Manager**

### Introduction

Transmille ProSite is an add on program for use with the ProCal calibration software package. ProSite allows the user to manage data transfer to a portable database for use on-site at customer premises or with in-situ equipment with the ability to later re-import this data into the main database.

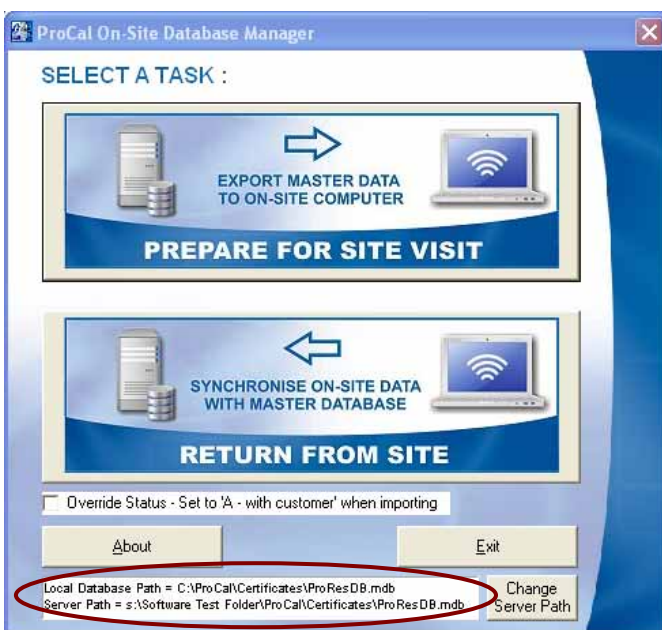
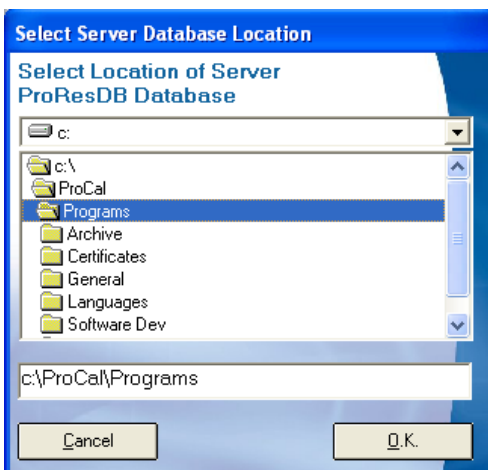
ProSite handles this complex operation, whilst ensuring both local and on-site database are kept synchronised to maintain data integrity. Operation is controlled via a simple and easy to use interface, with the two main functions accessed from on-screen buttons.



**The ProSite program is designed to be installed and run ON THE COMPUTER THAT IS TO BE TAKEN ON-SITE – this allows ProSite to automatically install the On-Site database and also transfer the procedure library if required. Please ensure the software is run on the On-Site PC.**

### Setting the Server Database Location

On initial start up ProSite will ask the location of the server to be set :



Once selected the database locations will be displayed at the foot of the screen.

The Server Database path can be changed at any time using the **Change Server Path** button.

### Prepare for Site Visit Function



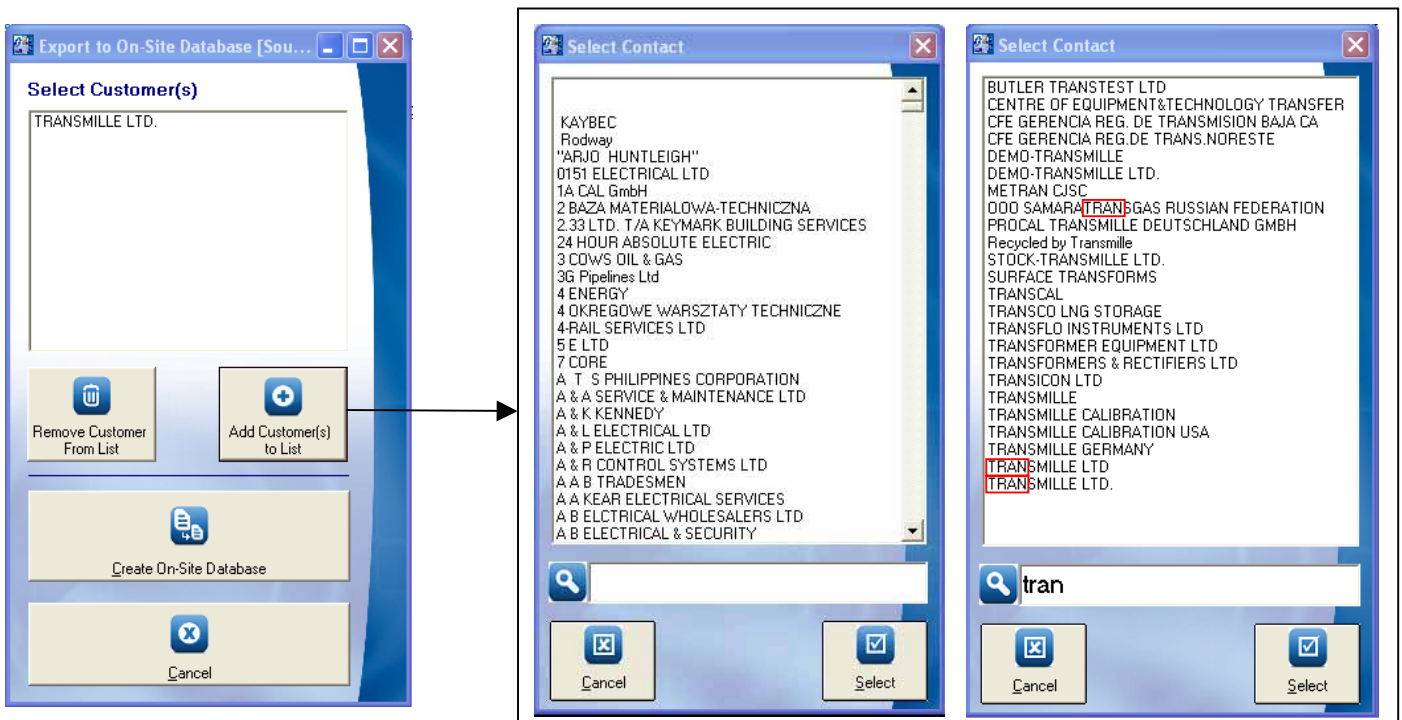
The ProSite Prepare for Site Visit function provides a method for selecting which customer data to export to the portable 'on-site' database. Once this database is created it is automatically copied to the correct location on the laptop or on-site computer for use in calibrating one or more customers instruments.

The export function provides the flexibility of exporting one or more customers' data, and will export the entire instrument history for use on-site should any amendments/corrections to data need to be made on-site.

If the program detects the on-site computer already has a database in the ProCal/Certificates folder it will automatically backup this data into a folder named **C:\ProCal\Certificates\Backups**

#### Step 1 : Select the Required Customer

Select a customer to add to the export list - note by starting to type in the customer name the list will filter to match, eg. typing 'tran' will filter to customers containing the character sequence 'tran'



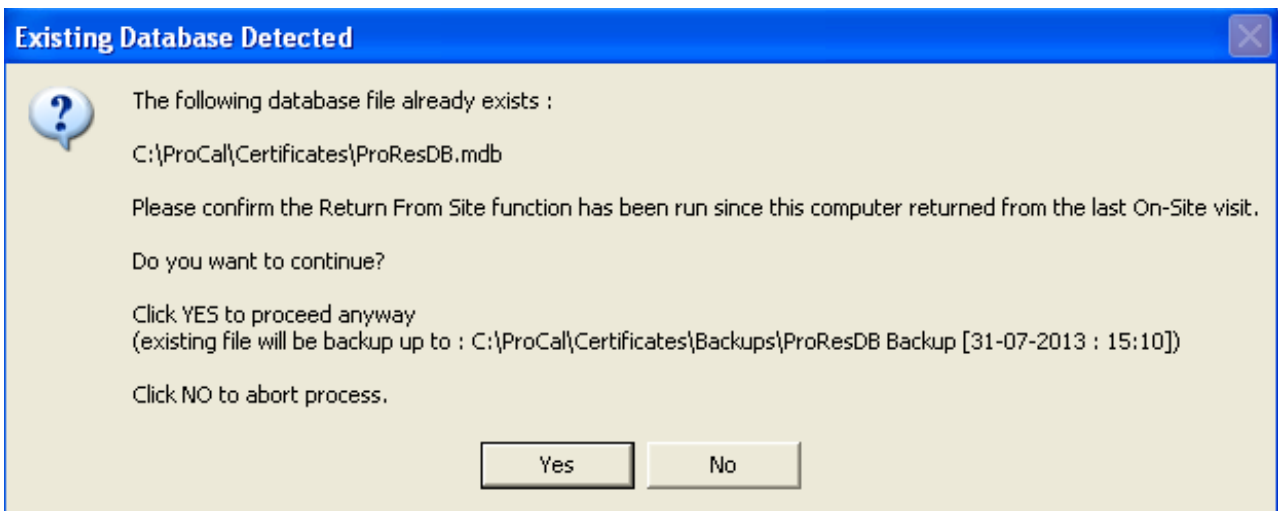
Click SELECT to add a customer to the export list – note more than one customer can be added to the list.

## Step 2 : Create and Install On-Site Database

Clicking on the 'Create On-Site Database' button begins the export process.



If an existing ProResDB.mdb file is detected on the local computer, a message as shown below is displayed and this existing database is backup up to the path shown. This ensures if a computer which has returned from site and the **Return From Site** function HAS NOT been run, that previous on-site data is not lost.

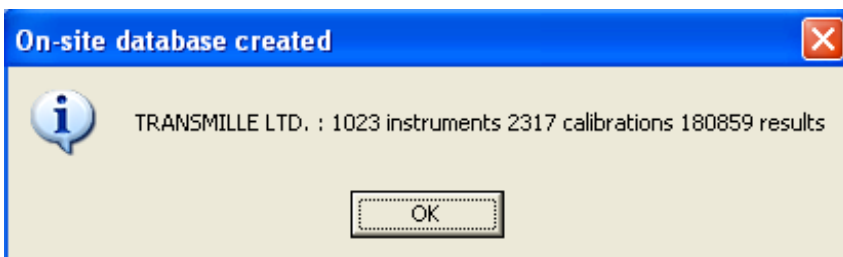


**Original ProResDB.mdb file on the on-site computer is backed up to C:\ProCal\Backups**

The 'Create On-site Database' process transfers all data from the server database to a local 'on-site' database for the selected customers. During progress the following screen is displayed :

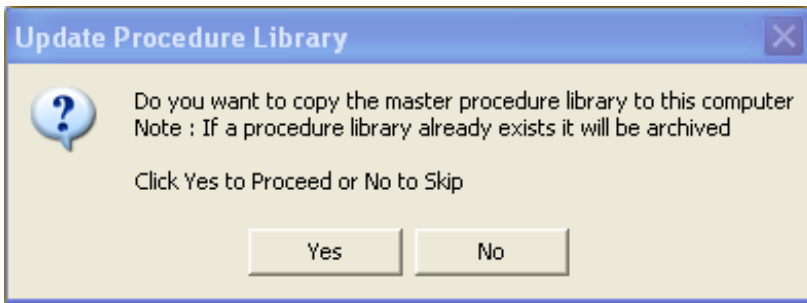


On completion of export the results of the export are displayed :



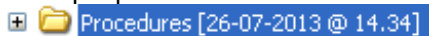
The On-Site database is now the active database on the on-site computer ready for use.

### Step 3 : Update Procedure Library



The program will now ask if the procedure library should be updated – note if an existing library already exists on the computer it will be archived and the folder name changed to add the date and time it was archived, eg. :

Example procedure archive folder :



**Original procedure library is backed up to C:\ProCal\Procedures [dd-mm-yyyy @ mm:hh]**

Click yes to update the local computer with the full procedure library from the server – this may take a few minutes depending on the size of the library.

### Step 4 : Contacts Database

The program will now copy the Contacts.mdb database from the server to the on-site computer. A backup of any existing contacts.mdb database will be made if it exists.



**Original contacts.mdb file is backed up to C:\ProCal\Certificates\Contacts Backup**

### Step 5 : Traceable Instrument Database

The program will now copy the traceable instrument data (above location 10) from the server to the on-site computer.

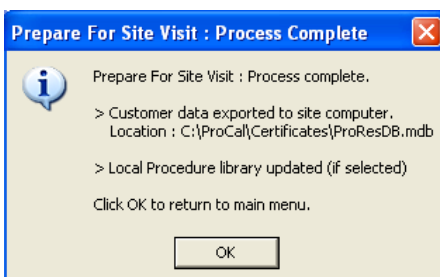
### Step 6 : Reference Selection Databases

The program will now copy the reference selection databases from the server to the on-site computer. A backup of any existing reference selection databases will be made if it exists.



**Original reference selection database files are backed up to C:\ProCal\Certificates\TraceDB Backup**

### Prepare For Site Visit : Process Complete



On completion of the process, a message will be displayed detailing the actions performed.

## Return From Site Function



The ProSite Return From Site function is designed for transferring data performed on-site back to the main ProCal database. This data is intelligently transferred, copying only changed data back to the main ProCal database, ensuring data integrity between changes made on-site and back at the main laboratory.

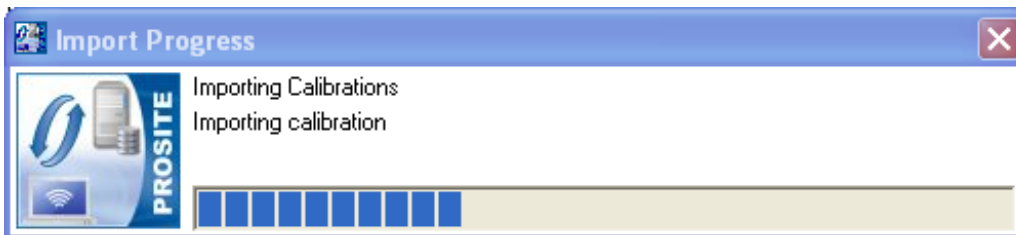
### Override Status Checkbox

The Override Status – Set to 'A – With Customer' When importing option allows the status to be forced to 'A' regardless of the status as set in the On-Site database.

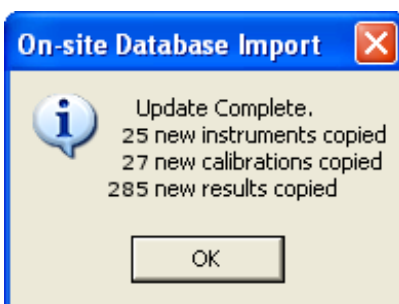
Override Status - Set to 'A - with customer' when importing

### Importing Data

Clicking on the Return From Site button will begin the Import process – a progress screen will be displayed :



On completion of the import, a summary of data imported will be displayed :



### Archiving Data Once Transferred

An additional message will be displayed asking if the current On-Site database (located in C:\ProCal\Certificates) should be archived. This allows ProSite to perform 'housekeeping' and move the file out of the 'active' folder ready for the Prepare for On Site Visit function to run.

Note :This is a completely option step, but ensures that the On-Site computer is 'reset' ready to be loaded with the next customer database for the next On-Site visit. If you select NO for this step, the software will simply warn the user that a potentially 'unprocessed' ProResDB.mdb file exists in the active folder (see Step 2 : Create and Install On-Site Database for details)

