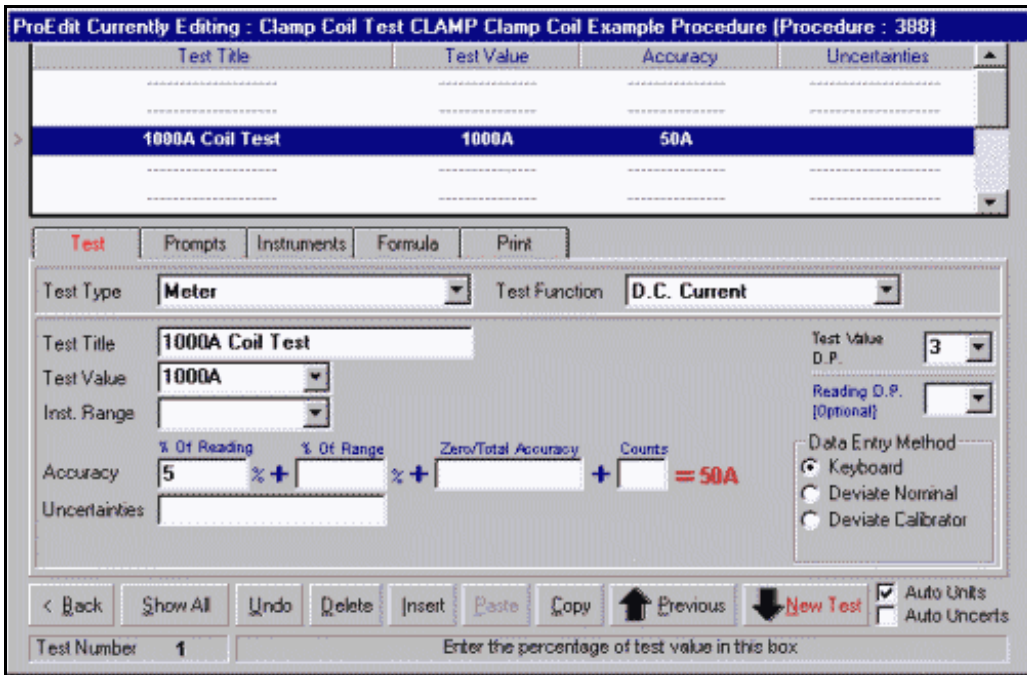
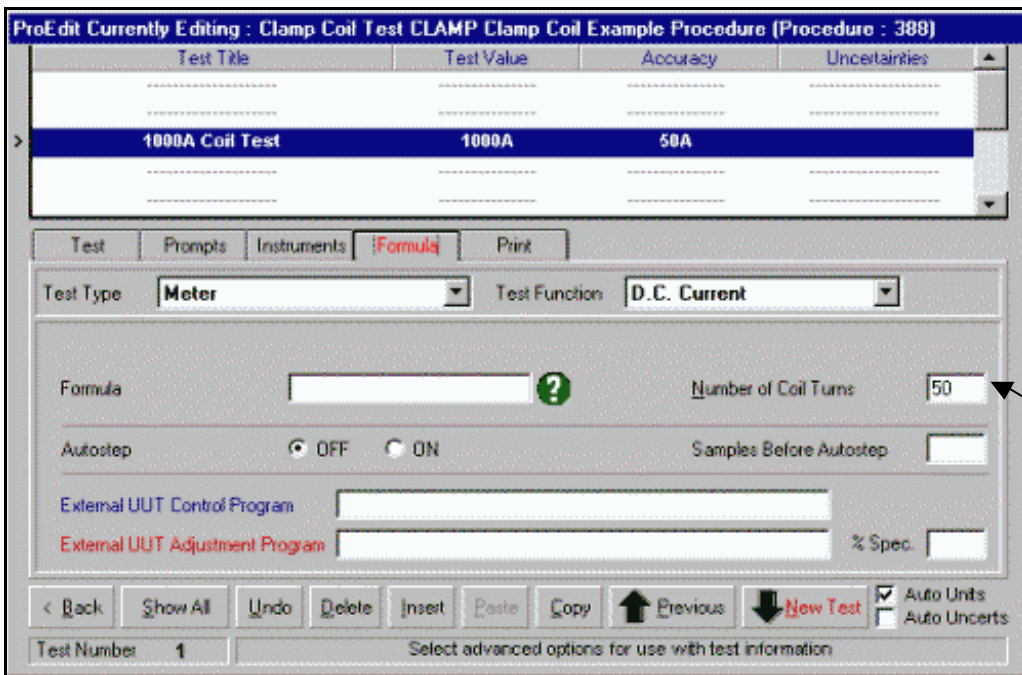


To enable testing of Clamp Meters, a 50 turn coil can be used to simulate currents up to 1000A. Set up a test using ProEdit with a high current test value , e.g. 1000A



In the FORMULA section of the test, set the number of coil turns to 50 :



When the procedure is run, ProCal will calculate the correct current value needed to be output from the 2000 series calibrator through the coil to obtain the test value (1000A is the maximum possible, i.e. 20A \* 50 = 1000A).