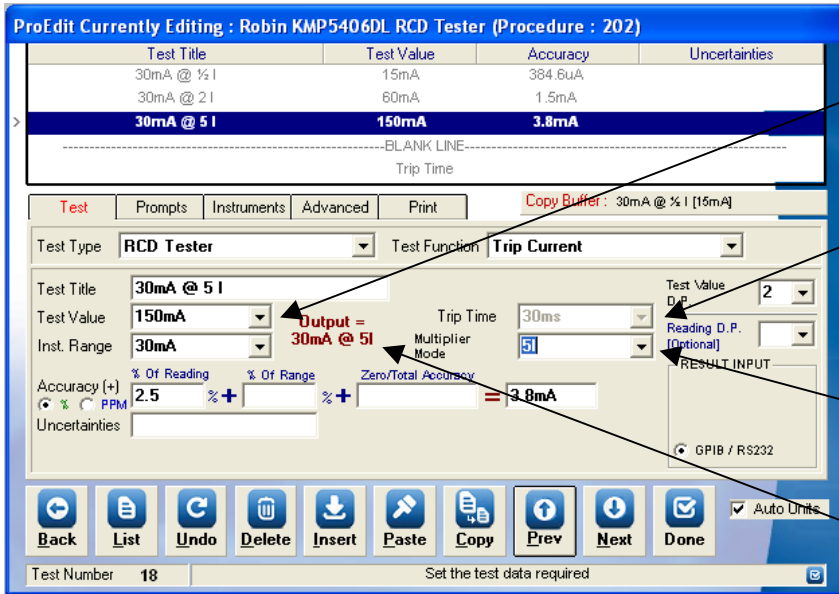


Introduction

ProCal and ProEdit incorporate support for the RCD multiplier function when testing RCD test current.

To use this function, the following controls are available :



TEST VALUE – SET AS EXPECTED VALUE FROM TESTER -
EG. FOR A 30mA 5I TEST SET
150mA (30mA x 5 = 150mA)

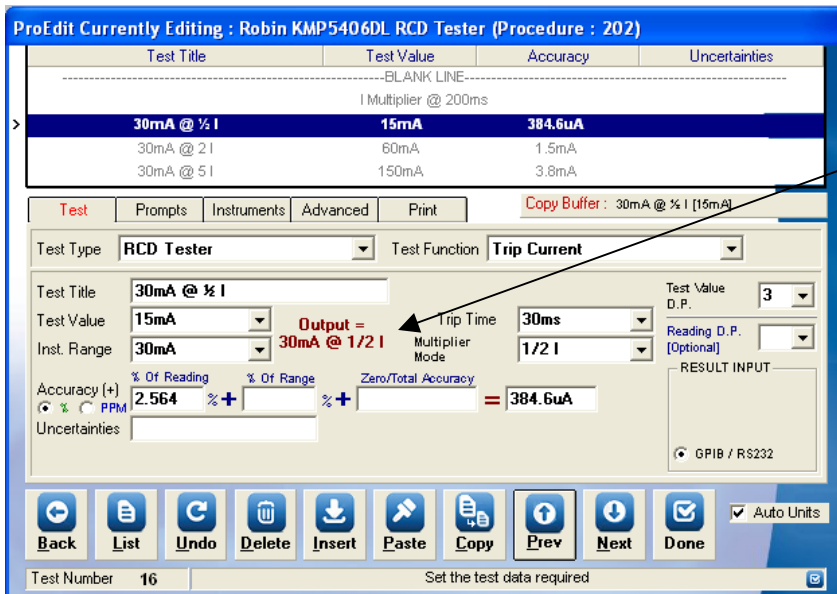
TRIP TIME

RCD MULTIPLIER

ACTUAL OUTPUT CALCULATION
(BASED ON RCD MULTIPLIER)

Setting Up a 1/2 I Test

For a 1/2 I test the **test value** should be set at the measurement range **divided by 2**



PROEDIT DISPLAYS THE CALCULATED OUTPUT VALUE (OUTPUT BY THE 3200) BASED ON THE TEST VALUE AND THE RCD MULTIPLIER

15mA @ 1/2 I = 30mA required output from 3200 calibrator with 1/2 I mode selected

**Output =
30mA @ 1/2 I**

Setting Up a 2 I Test

For a 2 I test the **test value** should be set at the measurement range **multiplied by 2**

ProEdit Currently Editing : Robin KMP5406DL RCD Tester (Procedure : 202)

Test Title	Test Value	Accuracy	Uncertainties
30mA @ 1/2 I	15mA	384.6uA	
30mA @ 2 I	60mA	1.5mA	
30mA @ 5 I	150mA	3.8mA	

Test Type: RCD Tester | Test Function: Trip Current

Test Title: 30mA @ 2 I | Test Value: 60mA | Inst. Range: 30mA | Accuracy: 2.5% | Zero/Total Accuracy: 1.5mA

Output = 30mA @ 2I

Test Value D.P.: 2 | Multiplier Mode: 2I | Trip Time: 200ms

Buttons: Back, List, Undo, Delete, Insert, Paste, Copy, Prev, Next, Done

Test Number: 17 | Set the test data required

PROEDIT DISPLAYS THE CALCULATED OUTPUT VALUE (OUTPUT BY THE 3200) BASED ON THE TEST VALUE AND THE RCD MULTIPLIER

60mA @ 2 I = 30mA required output from 3200 calibrator with 2 I mode selected

Output = 30mA @ 2I

Setting Up a 5 I Test

For a 5 I test the **test value** should be set at the measurement range **multiplied by 2**

ProEdit Currently Editing : Robin KMP5406DL RCD Tester (Procedure : 202)

Test Title	Test Value	Accuracy	Uncertainties
30mA @ 1/2 I	15mA	384.6uA	
30mA @ 2 I	60mA	1.5mA	
30mA @ 5 I	150mA	3.8mA	

Test Type: RCD Tester | Test Function: Trip Current

Test Title: 30mA @ 5 I | Test Value: 150mA | Inst. Range: 30mA | Accuracy: 2.5% | Zero/Total Accuracy: 3.8mA

Output = 30mA @ 5I

Test Value D.P.: 2 | Multiplier Mode: 5I | Trip Time: 30ms

Buttons: Back, List, Undo, Delete, Insert, Paste, Copy, Prev, Next, Done

Test Number: 18 | Set the test data required

PROEDIT DISPLAYS THE CALCULATED OUTPUT VALUE (OUTPUT BY THE 3200) BASED ON THE TEST VALUE AND THE RCD MULTIPLIER

150mA @ 5 I = 30mA required output from 3200 calibrator with 5 I mode selected

Output = 30mA @ 5I

5I Test Selected

Trip Time fixed to 30ms for best results using 5I mode

OK

NOTE :
For 5I testing ProEdit will set 30ms test time for best results – a message will be displayed when selecting 5I mode. The Trip Time drop down list will also be fixed to 30ms and disabled