

**TRANSMILLE**

**SOLUTIONS IN CALIBRATION**



# CRYSTAL REPORTS



ProCal, ProCert &  
ProCal-Track Crystal  
Reports Support



# CRYSTAL REPORTS – Overview



→ ProCal and ProCal-Track installations include all run-time files needed to view/print a Crystal Report.

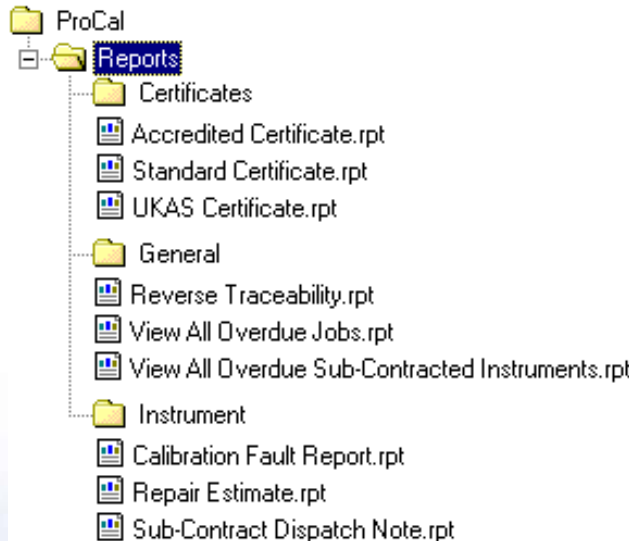


→ Installation of Crystal Reports is only required for creating/editing reports (Standard Edition Version 9 is sufficient)



→ ProCal / ProCal-Track is supplied complete with reports for certificates, fault reports and repair estimates

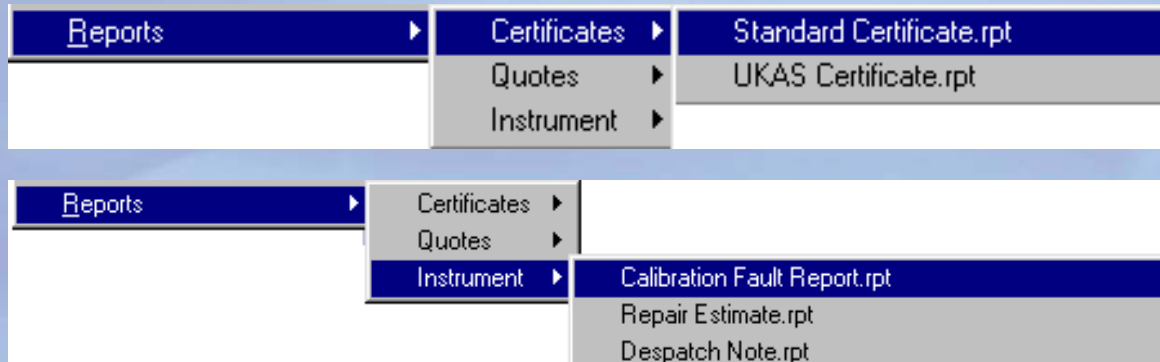
# CRYSTAL REPORTS – Overview (Cont'd)



→ ProCal and ProCal-Track use report files which are located in specific folders as shown left.

→ When ProCal or ProCal-Track are run, these report folders will be displayed in menus as shown further on in this document (note : some folders will only be displayed where appropriate within the program).

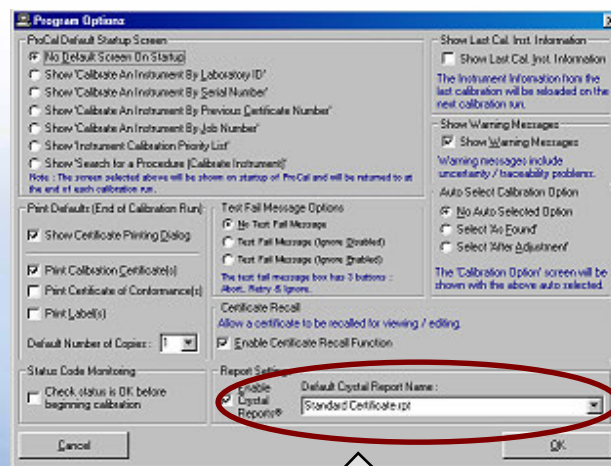
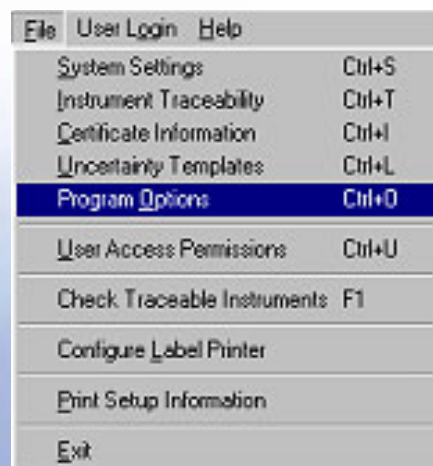
- A user can add report files to these folders (e.g. add new certificate)
- In addition, up to *two* customer folders can be added.



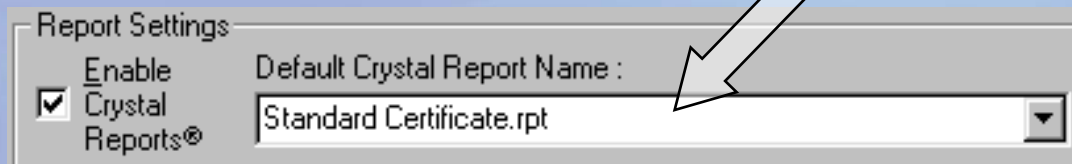
# CRYSTAL REPORTS – ProSet **Global** Report Setup

→ Use ProSet to enable Crystal reports

→ A crystal report can also be selected as the default 'global' report. All calibrations performed will use this Crystal Report (except where a procedure has a specific Crystal Report set)



→ Setting the default report name effectively 'turns off' the built in certificate format in ProCal.



# CRYSTAL REPORTS – ProEdit Procedure Report Setup

→ A Crystal report can also be selected for a specific procedure. This ‘overrides’ the global report setting if selected in ProSet for this procedure only.

Procedure Instrument Information (Proc 1)

Instrument Description: Multimeter Manufacturer: HP / Agilent

Model Number	Version Number	Certificate Type	Date Created / Edited	Last Used
34401A	1.00AUTO/N	UKAS Certificate	10/10/2004	10/12/2004

Notes: Report Filename: Accredited Certificate.rpt

Comment Line 1: Instrument was in lab for at least 4 hours to stabilise before calibration

Comment Line 2: Front Panel inputs were used for calibration.

Comment Line 3: 4 Wire kelvin connections were used for ohms measurements below

Comment Line 4:

Comment Line 5: \*\*\* Example Closed Loop Verification Procedure \*\*\*

Column Headings: Reset To Default

Tolerance Title: Tolerance Price / Stock Code: Multimeter002 W/E8 Credits: 0

Applied Value Title: Applied Value Find Stock Code

Reading Title: Reading

Buttons: Exit Print Procedure View Technical File Next >>

Report Filename

- Standard Certificate.rpt
- UKAS Certificate.rpt
- Accredited Certificate.rpt

→ The selected report is stored when a calibration is saved. When the certificate is printed, the report is displayed on the print dialog window.

Print Certificate STD6443 For Instrument ID00007

Number of Copies: 1

Print Options:

- Print Calibration Certificate(s)
- Report file in use - Print options available during preview
- Report File: Accredited Certificate.rpt
- Print Certificate of Conformance(s)
- Print Label(s)

Status: Ready.

Buttons: Cancel OK



# CRYSTAL REPORTS – ProCal Report Use

→ ProCal provides the facility to run a Crystal Report during a calibration. This allows fault reports or repair estimates to be created to easily inform a customer :

Code	Description	Quantity	Cost (Each)
	Total Parts Cost		£ 12.00
	Repair Cost		£ 58.00
	Calibration Cost		£ 86.00
	Repair Time		
	Cal / Test Time		01:03:31
	Engineer		

Total Parts Cost  
£ 12.00  
Repair Cost  
£ 58.00  
Calibration Cost  
£ 86.00  
Repair Time  
Cal / Test Time  
01:03:31  
Engineer  
Edit Parts List

Select an instrument status from the available options below.

- Calibration Complete [NOT AVAILABLE - 20 Incomplete Tests]
- Adjustment Required
- Awaiting Customer Response / Information
- Calibration Incomplete
- Other

Run a Report

- General
- Reverse Traceability.rpt
- View All Overdue Jobs.rpt
- View All Overdue Sub-Contracted Instruments.rpt
- Repair Estimate.rpt
- Calibration Fault Report.rpt
- Sub-Contract Dispatch Note.rpt

Run Report

**CALIBRATION FAULT REPORT**

**CALIBRATION FAULT REPORT**

# CRYSTAL REPORTS – Report Summary

→ ProSet allows the Crystal reports mode to be activated. The default report setting allows a specified report to be used whenever a certificate is viewed/printed.

→ ProEdit allows a procedure to be linked to a specific report, which overrides the default report if set in ProSet program options.

→ Report priority hierarchy :

**PROCAL > BUILT IN CERTIFICATE**



***PROSET > DEFAULT REPORT NAME  
(IF SET)***



***PROEDIT > DEFAULT PROCEDURE  
REPORT NAME (IF SET)***

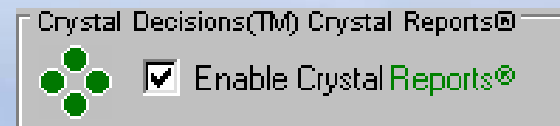
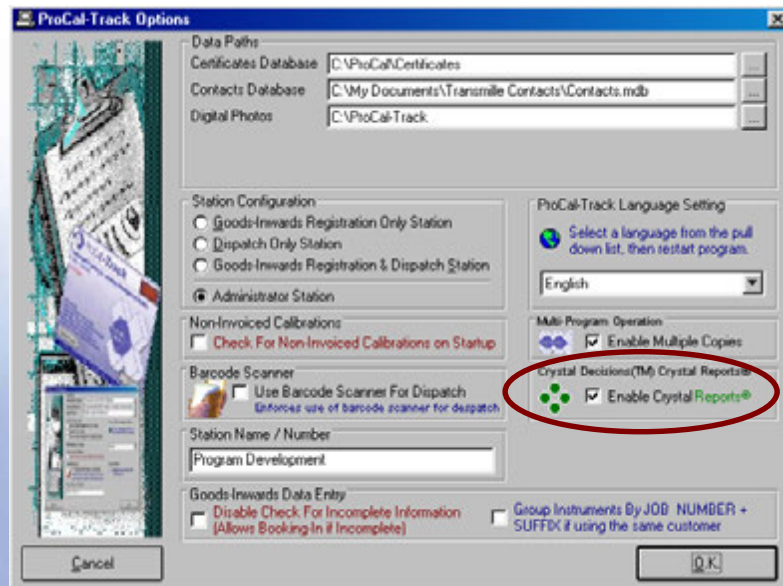
**P  
R  
I  
O  
R  
I  
T  
Y**





# CRYSTAL REPORTS – ProCal-Track Crystal Report Setup

→ Crystal Reports can be activated in ProCal-Track using the options screen.

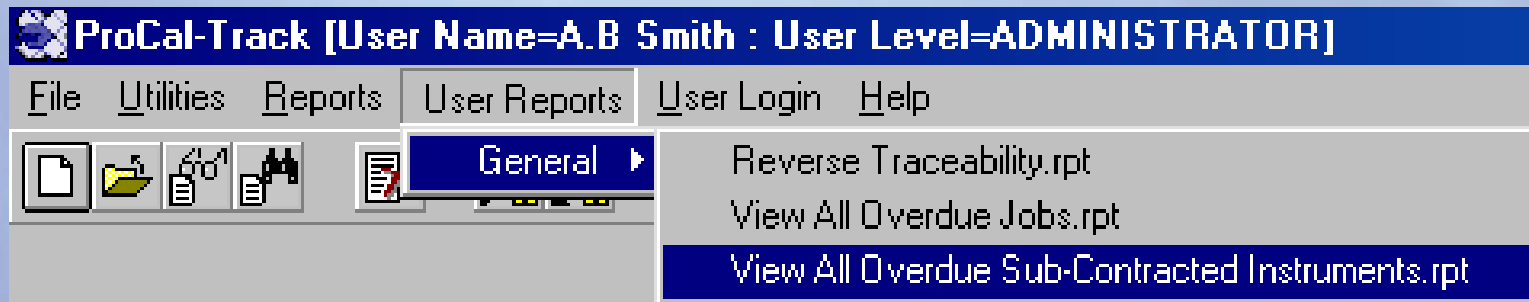


# CRYSTAL REPORTS – ProCal-Track Report Use

→ ProCal-Track provides two methods for running Crystal Reports. Reports may be of two general types :

1 : General (e.g. View all overdue sub-contracted instruments)

The main menu of ProCal-Track provides access to the general type reports - to run one of these reports, simply select it from the menu :



# CRYSTAL REPORTS – ProCal-Track Report Use (Cont'd)

2 : Instrument Specific (e.g. a certificate or a calibration fault report)

To run an instrument specific report, a print menu button is available from the on-screen job sheet.

Choose the 'Reports' menu item to navigate through the available reports.

The screenshot displays the 'On-Screen Job Sheet' window for System ID T00614104. The job details include Job No. 12965, Instrument Transmile 2100, and Service Type G: New Instrument Test. A print menu is open, showing options like 'Print Job Sheet', 'Print Packing ID Sheet', and 'Reports'. The 'Reports' menu is further expanded to show 'Certificates' and 'Instrument' sub-menus. The 'Instrument' sub-menu lists reports such as 'Repair Estimate.rpt', 'Calibration Fault Report.rpt', and 'Sub-Contract Dispatch Note.rpt'. A red arrow points from the 'Print Packing ID Sheet' option in the main menu to the 'Reports' sub-menu.

Print Job Sheet  
Print Packing ID Sheet

Print Job Label  
Print ID Label  
Print Accessories Labels  
Print Mains Safety Label

Print Job Completion Form  
Print Service Log  
Print Certificate & Label

Print Serial Number Label

Reports ▶

Certificates ▶

Instrument ▶

Repair Estimate.rpt  
Calibration Fault Report.rpt  
Sub-Contract Dispatch Note.rpt