



1000 Series

Test Procedure Manager

Editing : TestProc20

Procedure Name:

	Test Type	Test Value	Frequency [Hz]	Inst. Range	Number D.P.	Accuracy [% Reading]	Accuracy [% Range]	Digits / Counts	Accuracy Total
1	DCV	19.00mV		20mV	2	0.5	1	1	305uV
2	DCV	190.0mV		200mV	1	0.5	1	1	3.1mV
3	DCV	1.900V		2V	3	0.5	1	1	30.5mV
4	DCV	19.00V		20V	2	0.5	1	1	305mV
5	DCV	190.0V		200V	1	0.5	1	1	3.1V
6	DCV	590V		600V	0	0.5	1	1	10V
7	DCV	1000V		1000V	0	0.5	1	1	16V
8	DCV	-1V		2V	0	0.5	1	1	1V
9	DCV	0V		2V	0	0.5	1	1	1V
10	DCV	1V		2V	0	0.5	1	1	1V
11	ACV	19.00mV	1000	20mV	2	0.5	1	2	315uV
12	ACV	190.0mV	1000	200mV	1	0.5	1	2	3.2mV
13	ACV	1.900V	1000	2V	3	0.5	1	2	31.5mV
14	ACV	19.00V	1000	20V	2	0.5	1	2	315mV
15	ACV	190.0V	1000	200V	1	0.5	1	2	3.2V
16	ACV	590V	1000	600V	0	0.5	1	2	11V

Delete Test Edit Test Add Test

Cancel Save As Save

1000 Series : Test Procedure Manager

Editing : TestProc20

Procedure Name: TestProc20

	Test Type	Test Value	Frequency [Hz]	Inst. Range	Number D.P.	Accuracy [% Reading]	Accuracy [% Range]	Digits / Counts	Accuracy Total
1	DCV	19.00mV		20mV	2	0.5	1	1	305uV
2	DCV	190.0mV		200mV	1	0.5	1	1	3.1mV
3	DCV	1.900V		2V	3	0.5	1	1	30.5mV
4	DCV	19.00V		20V	2	0.5	1	1	305mV
5	DCV	190.0V		200V	1	0.5	1	1	3.1V
6	DCV	590V		600V	0	0.5	1	1	10V
7	DCV	1000V		1000V	0	0.5	1	1	16V
8	DCV	-1V		2V	0	0.5	1	1	1V
9	DCV	0V		2V	0	0.5	1	1	1V
10	DCV	1V		2V	0	0.5	1	1	1V
11	ACV	19.00mV	1000	20mV	2	0.5	1	2	315uV
12	ACV	190.0mV	1000	200mV	1	0.5	1	2	3.2mV
13	ACV	1.900V	1000	2V	3	0.5	1	2	31.5mV
14	ACV	19.00V	1000	20V	2	0.5	1	2	315mV
15	ACV	190.0V	1000	200V	1	0.5	1	2	3.2V
16	ACV	590V	1000	600V	0	0.5	1	2	10V

Delete Test

Cancel

EASILY CREATE PROCEDURES FOR UPLOAD TO THE 1000 SERIES USING THE DEDICATED PROCEDURE EDITOR.

Edit Test 13

Test Type: ACV

Test Value: 1.900V @ 1000 Hz

Number of DP: 3

Meter Range: 2V

UUT Accuracy

% Reading	% Range	Digits	Total			
0.5	+	1	+	2	=	31.5mV

Cancel Update

EACH TEST POINT CAN BE EASILY EDITED, WITH BUILT-IN ACCURACY CALCULATOR

1000 Series : Test Procedure Manager

Procedure Builder Wizard : Multimeter

Procedure Name:

1 Meter Display: 2 Actual Test Value:

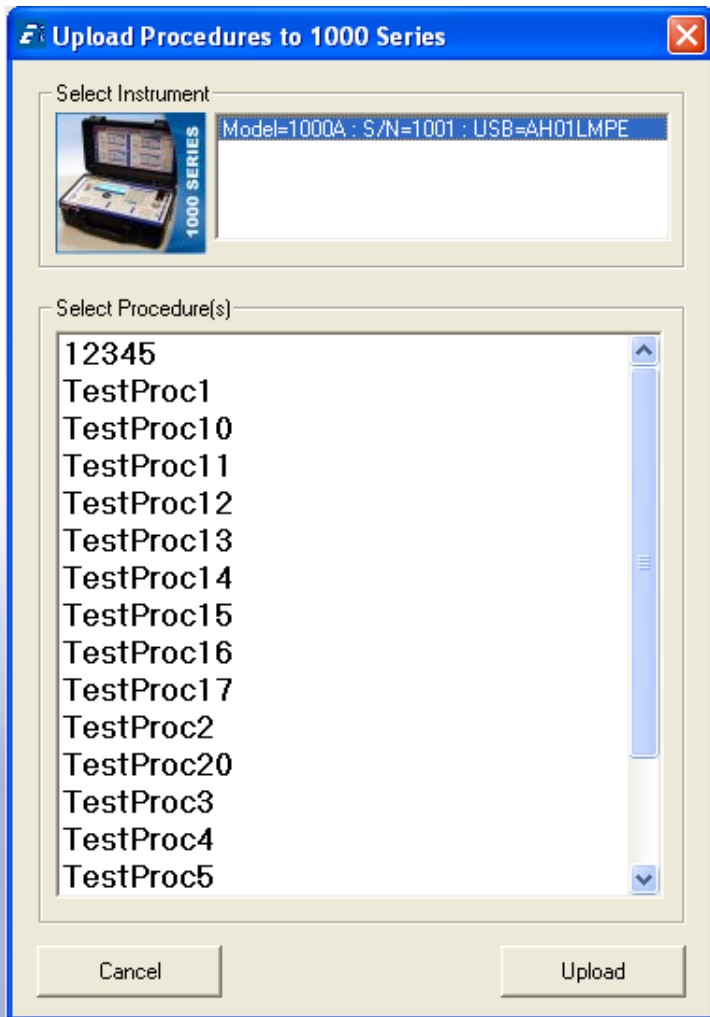
Function	Range Information		Instrument Specifications			Frequency (Hz)
	Lowest Range	Highest Range	% Of Reading	% Of Range	± No. Of Counts	
DCV	<input type="text" value="30mV"/>	<input type="text" value="1000V"/>	<input type="text" value="0.5"/>	<input type="text" value="1"/>	<input type="text" value="1"/>	—DC—
ACV	<input type="text" value="30mV"/>	<input type="text" value="1000V"/>	<input type="text" value="0.5"/>	<input type="text" value="1"/>	<input type="text" value="2"/>	<input type="text" value="1000"/>
DCI	<input type="text" value="300uA"/>	<input type="text" value="10A"/>	<input type="text" value="1"/>	<input type="text" value="2"/>	<input type="text" value="5"/>	—DC—
ACI	<input type="text" value="300uA"/>	<input type="text" value="10A"/>	<input type="text" value="1"/>	<input type="text" value="2"/>	<input type="text" value="10"/>	<input type="text" value="60"/>
OHMS	<input type="text" value="30R"/>	<input type="text" value="36R"/>	<input type="text" value="2"/>	<input type="text" value="5"/>	<input type="text" value="15"/>	—DC—
CAPS	N/A					—DC—
FREQ						

Linearity Function: Linearity Range: Linearity Step:

A BUILT-IN WIZARD FOR MULTIMETER PROCEDURE CREATION SIMPLIFIES PROCEDURE WRITING –

CREATE A NEW PROCEDURES IN A MATTER OF MINUTES

DETECTING USB DEVICES



SIMPLY SELECT A 1000 SERIES CALIBRATOR FROM THE LIST, SET THE PROCEDURES TO UPLOAD AND THE PROCEDURE EDITOR WILL UPLOAD THE SELECTED PROCEDURES TO THE 1000 SERIES AUTOMATICALLY

UP TO 10 PROCEDURES OF UP TO 50 TESTS IN LENGTH CAN BE UPLOADED TO THE 1000 SERIES MEMORY.



www.youtube.com/Transmille



[@Transmille](https://twitter.com/Transmille)

Transmille : Solutions In Calibration

**Providing Innovative
Solutions For The
Metrology Industry**

