



# **PROCAL / PROCAL-TRACK**

**Using ProCal, ProCert or  
ProCal-Track**

# PRINTING CERTIFICATES - Overview

Certificate printing can be achieved using the following programs



ProCert allows existing certificates to be reprinted at any time. ProCert can be used by all types of users and does not allow any changes to be made – it is a basic ‘print-only’ program.



ProCal can be set to allow the test engineer to print the certificate once the calibration is saved.



ProCal-Track can allow certificates to be reprinted on a one-off basis, or use or the ‘process paperwork’ function to automate the paperwork handling and prints the certificate as part of this function.

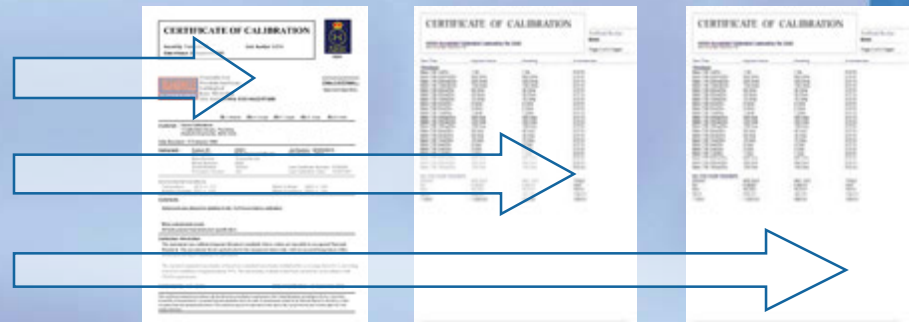
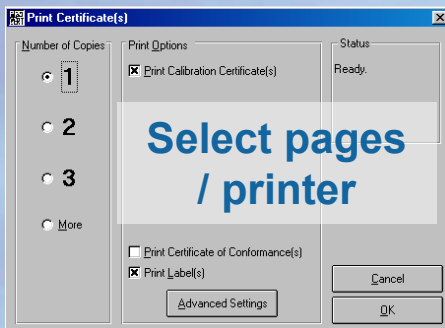
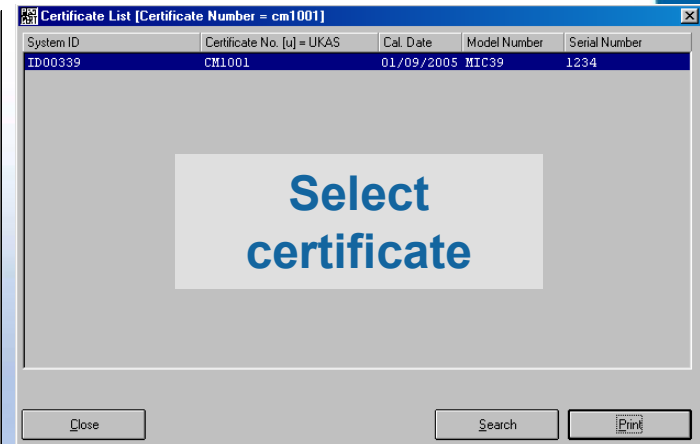
# PRINTING CERTIFICATES - ProCert



ProCert allows existing certificates to be re-printed at any time. ProCert can be used by all types of users and does not allow any changes to be made – it is a basic ‘print-only’ program.



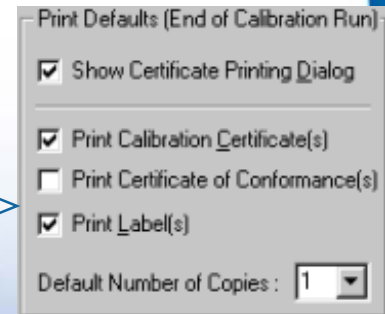
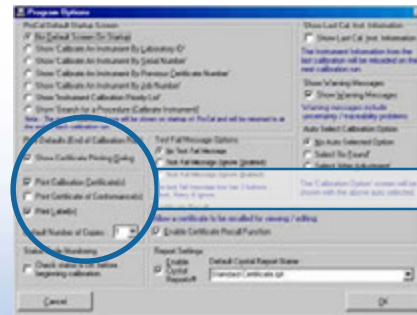
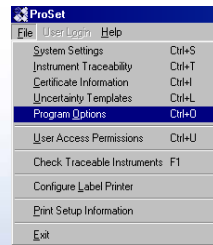
Use ProCert to search for a certificate, select pages & printer and print.



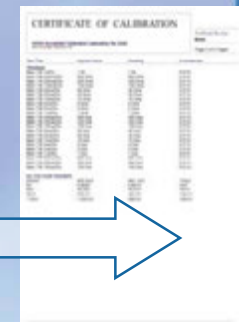
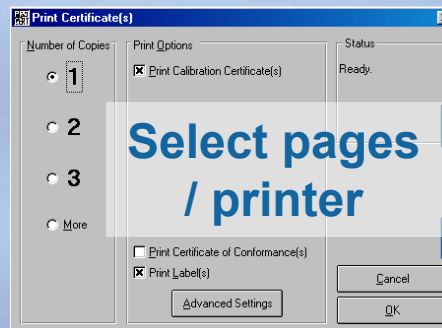
# PRINTING CERTIFICATES - ProCal



ProCal can be set to allow the test engineer to print the certificate once the calibration is saved. Use ProSet to select printing at the end of a calibration



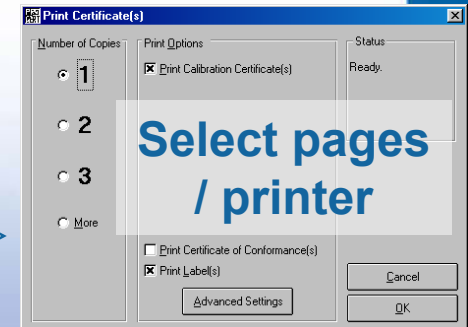
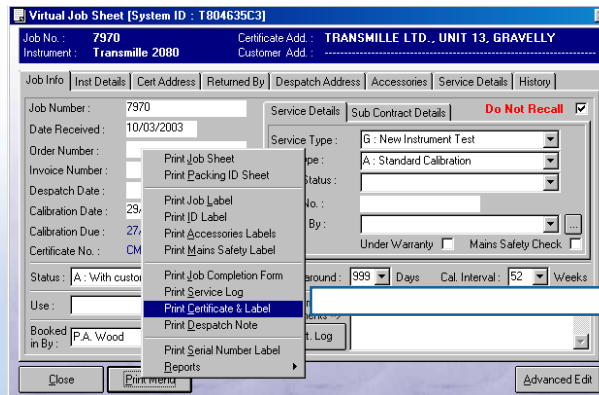
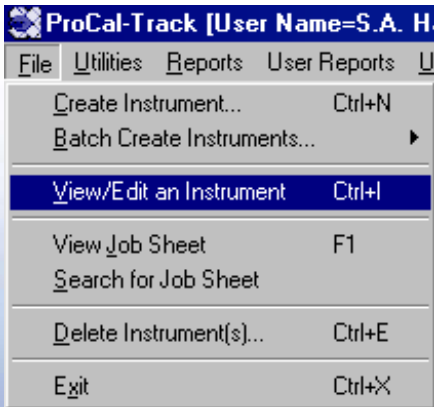
On completion of a calibration, the print dialog is displayed and the certificate can be printed.



# PRINTING CERTIFICATES – ProCal-Track



ProCal-Track can allow certificates to be reprinted on a one-off basis, or use or the 'process paperwork' function to automate the paperwork handling and prints the certificate as part of this function.



Using the process paperwork function, the latest certificate is printed.

